

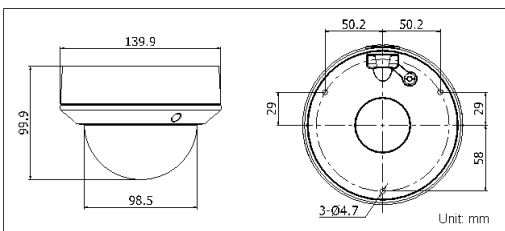
DS-2CD2712F-I(S) 1.3MP VF IR Dome Network Camera



Key features

- 1.3 megapixel (1280 x 960) resolution
- HD real-time video
- IR LEDs: up to 20m
- DWDR & 3D DNR & BLC
- Onboard storage (up to 32GB)
- (-S) Audio I/O, Alarm I/O
- IP66
- Vandal-proof

Dimensions



Accessories



DS-1238ZJ
Pendant Mount
Aluminium Bracket



DS-1256ZJ
Wall Mount
Aluminium Bracket
with gang box

DS-2CD2712F-I (S)	
Camera	
Image sensor	1/3" progressive scan CMOS
Min. illumination	0.01 lux@F1.2, AGC on 0 lux with IR
Shutter time	1/25s (1/30s) ~ 1/100,000s
Lens	2.8 ~ 12mm @ F1.4, Angle of view: 80° ~ 28.7°
Lens mount	Φ14
Auto iris	DC drive
Day & night	ICR
Digital noise reduction	3D DNR
Wide dynamic range	Digital WDR
Backlight compensation	Yes, zone configurable
Angle adjustment	Pan: 0° ~ 360°, tilt: 0° ~ 75°, rotation: 0° ~ 360°
Compression standard	
Video compression	H.264 / MJPEG
H.264 compression profile	Main profile
Video bit rate	32 Kbps ~ 16 Mbps
Audio compression (-S)	G.711 / G.726
Audio bit rate (-S)	64Kbps (G.711) / 16Kbps (G.726)
Image	
Max. image resolution	1280 x 960
Frame rate	50Hz: 25fps (1280 x 960), 25fps (1280 x 720) 60Hz: 30fps (1280 x 960), 30fps (1280 x 720)
Image settings	Saturation, brightness, contrast adjustable through client software or web browser
Network	
Network storage	NAS (iSCSI optional)
Alarm trigger	Motion detection, tampering alarm
Protocols	TCP/IP, HTTP, DHCP, DNS, DDNS, RTP, RTSP, PPPoE, SMTP, NTP, SNMP, HTTPS, FTP, 802.1x, Qos, UPnP (SIP, SRTP, IPv6 optional)
System compatibility	ONVIF, PSIA, CGI
General functionalities	User authentication, dual stream, watermark
Interface	
Communication interface	1 RJ45 10M / 100M ethernet port
On-board storage	Built-in Micro SD card slot, up to 32 GB
General	
Operating conditions	-30 °C ~ 60 °C (-22 °F ~ 140 °F), humidity 95% or less (non-condensing)
Power supply	DC12V ± 10%, PoE (802.3af)
Power consumption	Max. 5.5W (max. 7W with ICR on)
Impact protection	IEC60068-2-75Eh, 50J; EN50102, up to IK10
Ingress protection level	IP66
IR range	Up to 20m
Dimensions	Φ 140 x 99.9 mm (Φ 5.51" x 3.94")
Weight	1000g

Available models

DS-2CD2712F-I, DS-2CD2712F-IS

* -S: Audio I/O (MIC IN) interface and Alarm I/O interface.

* Product picture and technical specs subject to change without previous notice.
For further information, please contact our local sales representatives.